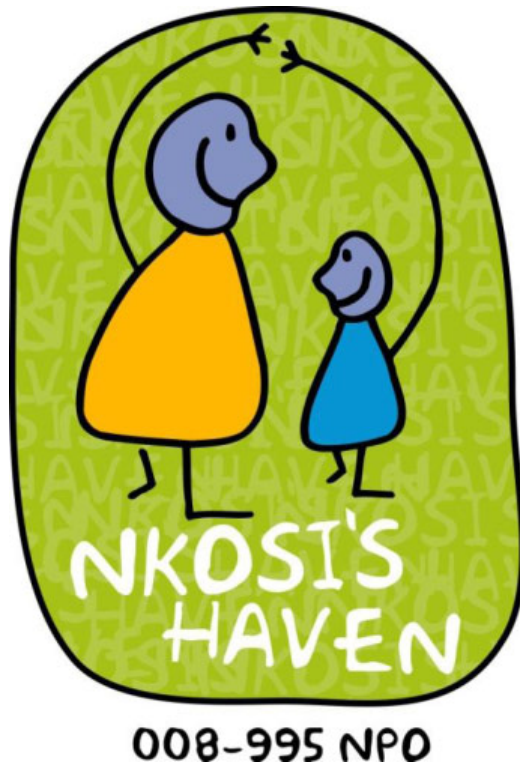


# ANNUAL REPORT



FINANCIAL YEAR ENDING 31<sup>ST</sup> MARCH 2010

Prepared by:-

Gail Johnson  
Founding Director.

## TABLE OF CONTENTS

## PAGE

1.	Current Directors	3
2.	Income Through Donors	4
3.	Properties	7
4.	Outreach	15
5.	Medical	15
6.	Education	16
7.	Therapeutic Services	17
8.	Individual Counselling	22
9.	Volunteer Programme	24
10.	Visitors	26
11.	Soweto Gospel Choir Outreach - Vukani	27
12.	Extra Mural Activities	33
13.	Staff Full Time	35
14.	Corporate Governance	36
15.	The Board	36

1. CURRENT DIRECTORS

- Gail Johnson - Founding Executive Director (Signatory)
- Pastor Dolores Fredericks - Non-Executive (Signatory)

\*\*\*\*\*

- Heather Davidson - Financial Manager (Signatory)

## **2. INCOME THROUGH DONORS**

### **UNITED STATES OF AMERICA**

- 4 Life Inc - 278,769.33 - farm
- Broadway Cares - R79,175.00
- Kansas Africa - R31,610.32 - therapy
- The Riverside Church / Project People Foundation - R4,003.44
- Private Donor - R 147 917.00

### **CANADA**

- CEDAR Foundation - R1,972,757.45 - Education from Pre-School to Tertiary including uniforms for over 90 kids
- Art for AIDS International

### **AUSTRALIA**

- 2,000.00
- Qantas Cabin Crew - A\$ 6 000.00  
(plus donation of product and labour)

### **UNITED KINGDOM**

- J Domnisse (Relatives in the UK) - R7,000.00
- Stenham Investments - R 11 999.50
- Robert Grace Trust - Facilitate donations from UK donors as well as funds raised by Soweto Gospel Choir

### **GERMANY**

- Regular anon donor - 5 - 10 000 Euros

### **THE NETHERLANDS**

- KidsRights - Euros                      running costs/ child support
- Wilde Ganzen - +- Euros              Village building costs
- Weeshuis der Hervormden - +- Euro's - Village building costs

### **NORWAY**

- Think Mental Fashion - R47,081.24

## Australia and America

- Knit A Square blankets for orphans

## SOUTH AFRICA

- SemArch - pro-bono architects
- Edward Nathan Sonnenberg - pro-bono attorneys plus annual Christmas presents for the children.
- Webber Wentzel Bowens - Christmas presents for children
- Cheil Worldwide - pro-bono advertising agency
- Dr de Necker & Ass. -pro-bono dental treatment
- Rainbow Construction - monthly donation
- Consul (Pty) Ltd
- Woolworths Rivonia - weekly donation food
- Woolworths 2<sup>nd</sup> Ave, Alberton - weekly donation - food
- Woolworths Parkmore - weekly donation food
- FoodBank - Fresh produce and groceries at regular intervals
- Ackermans Southgate - clothing donations
- Ackermans Parkmore - clothing donations
- Ackermans Hyde Park - various donations
- Nina Venjakob, Out of the Box and host of associates and colleagues - annual Christmas presents for moms and children
- Plascon Paints - litres and litres of paint for the Village
- The Soweto Gospel Choir (our largest local funder) R 772 520.00
- Altron Young Presidents Golf Day - R 60,000.00
- Bantex - assorted stationery
- ABSA - R5,000.00
- Amrod - R52 580.25 Education
- Back - a - Buddy - general public donations for Kilimanjaro climb
- Brait Foundation - R7,500.00
- Brockhouse Cooper - R20,000.00
- Capricorn - R10,000.00
- CaterCare - donation of catering equipment
- Nkosi's Labels - R200.00
- P.A.E. (Pty) Ltd - R5,000.00
- PB Inwezi - R20,000.00
- W Pokroy - R1,200.00
- Q File - R20,000.00
- K Chetty - R3,000.00
- Coffee Unplugged - R2,100.00

- DDB SA - R60,000.00 (R 20 000.00 per month for play therapy), Christmas Party, gifts.
- M Darwent - R600.00
- DJP Holdings - R3,000.00
- J Dommissie - R7,000.00
- Easigiving - R2,986.50
- Debbie; Tollman - R3,000.00 - Education
- Trust 31 Oval - R34,586.94
- Ethos - R15,000.00
- Mr & Mrs S Fish - R3,025.00
- Group Five - R12,750.00
- Investec - R16,200.00
- G Kelly - R6,000.00
- MacAdams - R10,000.00 and assistance with baking equipment
- Methodist Church - R10,446.50
- Mia - R13,900.00
- Rodean College R7,641.14
- Russell Investment - R5,887.10 (balance of Kilimanjaro)
- Salamander - R10,000.00 / Christmas Presents and annual outing to Civic
- Samsung - TV Sets and Music System
- J Savenye-Terblanche - R2,595.50
- M & G Slong - R2,450.00
- J Sinclair Thomson - R6,690.00
- Nicolie Smuts - R1,100.00
- Societe Generale - R50,000.00 (lounge suites and been bags leisure room), Christmas Party and Gifts
- SSI/SAACE - R17,200.00 - Annual relay.
- Supermac Agencies - R5,000.00
- Civic Theatre - tickets for Pantomine
- Container World - Donated converted, insulated and electrically prepared container for the Bakery.
- Donation of shares in Silkwood Mining Exploration company - shares sold to a mining company resulting in income of R 3.7 + mil.
- Many private individuals who have donated in lieu of presents for their birthdays, anniversaries and weddings. Often donations are received in memory of a loved one who has passed away.

### **3. PROPERTIES**

#### **3.1 NKOSI'S HAVEN - BEREA**

**(Nkosi's Haven & Friends, Nashua's Nkosi's Haven)**

In December we moved sixteen of the younger children from Berea across to the Village. There are still a couple of Toddlers who attend Kuddly Kids (these are mainly children belonging to the moms living in Berea), the rest are teenagers attending United Church School.

Both houses in Berea are desperate for makeovers - there is a lot of handyman work that needs attending. The Houses are in desperate need of a coat of paint. Additional cupboards are needed in the bedrooms, and efforts are being made to raise money to meet the demand.

No 25's kitchen remains the centre point of food preparation, meeting, shared responsibilities and duty allocation.

The dining room becomes study room for the senior grades 10 - 12 after dinner - 19H30 - 22H00.

The sitting room in 23 is the main TV centre with many a row over the remote - littlies for kiddies programs, moms for soaps and teens for soccer. The World Cup is going to prove interesting.

The resident manager resigned in June and it was decided that she would not be replaced as the matron was perfectly capable of handling the homes as most of the resident children are in their teens and should be perfectly capable of looking after themselves.



Two orphaned brother, Ayanda and Sanele, through the mentorship of Mark van der Walt of Russell Investment, accepted his challenge to raise money for Nkosi's Haven. September saw the two brother flying out with Mark and colleagues to climb Kilimanjaro as 'trial run' for the Aqu Challenge in late December / early January. Ayanda made it to the top of Kili (photo!!!), but sadly Sanele had to turn back due to altitude sickness. The end of December saw the two boys once again, jetting off to South America to take on the Aconcagua. Neither Mark nor the boys made it to the top and whilst the funds raised were not what was hoped for the achievements, courage and sheer determination of the boys were the winners.

Two groups of volunteers - Vision of Joy and Cheesekids are regular supporters of the Havens, visits include lunches, 'hard' labour, outings and tidying up in general.

### 3.2 NKOSI'S HAVEN 4LIFE FARM.

Our farm manager Mike was brutally attacked on 11<sup>th</sup> January and left for dead. His condition was such that he spent 2 weeks in ICU and a further week in general ward. His recuperation /rehabilitation took 6 months and he returned to the farm on 3<sup>rd</sup> August 2010. As a result of the attack an 'assistant' farm manager had to be sourced immediately.



Whilst not trained in broiler chicken product he did his best. The vegetable gardens were kept immaculate as where the orchards.

Alex (assistant farm manager) is also an avid gardener and developed the garden around the house magnificently.

300 broilers were lost to bronchitis, thus it was decided that the egg laying division be increased by some 40 chickens and to leave broiler production till proper runs could be purchased.



The board agreed that the director apply for a loan from the Land Bank to secure funds for the building/erection of 3 chicken runs - applications were submitted and R 196 000.00 odd has been approved.



3 135sqm of the farm has been cultivated of which 2 120 is used for vegetable production, 700sqm for fruit trees, 250 sqm for seedling vegetables and 65 sqm for herb production.

Additional funding is needed for additional chicken runs as well as hydroponic tunnels for vegetable production for sale on the open market.

### **3.3 THE NKOSI'S HAVEN VILLAGE**

The Nkosi's Haven Village was officially opened by Justice Edwin Cameron on 1<sup>st</sup> December 2009.

Being exceptionally fortunate in having received Dutch financial support for the additional buildings required such as the leisure room, baby day care centre, therapy block, ablution block for the sickbay and renovating the kitchen to industrial level, it was felt appropriate to officially open the Village on World AIDS Day.



Whilst a certain amount of buildings are still required, the main facilities, needed to make it as comprehensive a 'care/service facility' as possible were complete with phenomenal support from so many. SemArch are our pro-bono architects, Rainbow Construction were the appointed building contractors, TWP Projects, civil engineers, got involved on a pro-bono basis.

### **LEISURE BLOCK / DANCE HALL**

The leisure room is large enough to accommodate all residents during their "off" time. In anticipation for the world cup Altron's Young Presidents Club and Samsung donated



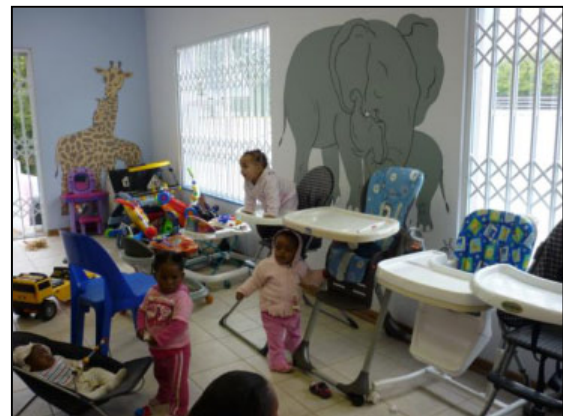
three huge TV screens in total. Colourful lounge suites and bean bags were donated by Societe Generale. The sprung wooden dance floor was donated by Afripalet and mirrors by Plateglass. Ballroom lessons are given every Friday afternoon by the Dance Club run by Martine Davis.



## **BABY DAY CARE CENTRE**

The objective of the Baby day care centre is to ensure that our babies are correctly cared for whilst the mothers are either doing their duties, hospital or clinic visits. Run by a qualified infant educationalist the Baby Day Care Centre can accommodate up to fifteen babies. It is also used to train new mothers in correct child care, bathing, feeding, hygiene and maintaining strict routines. Each new mother is expected to spend at least one full day a week tending babies in the Baby Day Care Centre. Baby development is strictly monitored and weekly reports are submitted to the Director, Therapist and Sick Bay. Any concerns such a slow development is immediately picked up on and intervention implemented.

Murals were painted by Canadian and South African volunteers.



## KITCHEN

Converting a domestic kitchen to an efficient fully fledged industrial facility was no mean feat but effectively dealt with by Eric Sonnichsen of Consul (PTY) Ltd, who again did all the design pro bono. The facility now serves on average 400 meals per day and sometimes many more depending on the number of visitors we have at any given time. In Keeping with Nkosi's Haven's belief in building the capacity of our resident mothers the kitchen is very ably run by a resident mom and two assistants.



Breakfast, lunch and supper are served providing the residents with healthy balanced nutrition required to support their immune system and to compliment the ARV medication. Although the cost is one of Nkosi's Haven's biggest monthly expenses the value of good nutrition proves itself on a daily basis.



## Additional bathrooms and offices for Matron and Residential Manager



To upgrade staff requirements an office was built to accommodate the Matron and Resident Manager. Plus to service the nine bed Sick Bay unit additional bathrooms that are wheelchair friendly and toilets were added including a shower for wheelchair bound patients.

## Therapy Block / Classrooms

Nkosi's Haven's philosophy of comprehensive interventions resulted in continuous therapy being available to the residents on a day to day basis. A full time Therapist and Social Worker address the emotional and psychological needs of the older residents whilst two part time play therapists are employed for the children. (It is the intention to employ at least two full time play therapist.) In addition two offices are allocated for much needed extra lessons and remedial teaching.



## **BAKERY**

### **OUR BAKERY PARTNERS**

The South African Whole Grain Bread Project (SAWGBP), an internationally-acclaimed bakery business founded by Dan Leader, Neil and Leann Ratner, opened its first container bakery at the Nkosi's Haven Village on 1<sup>st</sup> December, as well

Historically, whole grain breads have been an important part of traditional diets around the world, leading contemporary nutritionists to advocate for the consumption of whole grains as the building blocks of a healthy diet. The SAWGBP bread will be made from a proprietary blend of South African whole wheat, soy, cornmeal, seeds, and nutritional supplements, and will serve as a valuable source of proteins, vitamins, minerals, enzymes, amino acids and folic acid (essential for the health of pregnant women and children).

SAWGBP has partnered with MacAdams Baking Systems Ltd of South Africa to supply mobile container bakeries. The use of prefabricated fully equipped bakeries will be cost effective and create a model easily repeatable in different parts of South Africa and beyond.

Dan Leader, co-founder of the project mentions, "The SAWGBP has embarked on a multifaceted mission reflecting a holistic approach to the needs of HIV/AIDS-infected people and at its most basic level. We intend meeting the essential dietary needs through supplying fortified whole grain bread.

Dr Neil Ratner, SAWGBP co-founder, says, " This bread has been developed under the advisement of nutritional and medical experts in the U.S.A and South Africa whose main aim is to deliver an optimal balance of essential vitamins, minerals and proteins."

"We are proud and delighted to accept this donation from SAWGBP. The Village represents an ideal situation where the need for the final product is matched by a team of capable employees willing to supply the necessary labour."

In addition to donating the bakery SAWGBP will donate the bread mix for the first six months of this operation. Beyond that, ownership of the business and the oversight of daily operations will remain in the hands of Nkosi's Haven Village.

Our Pride and joy a facility not only for capacity building but more importantly income generating and our first steps towards becoming more self reliant.



#### **4. OUTREACH**

Nkosi's Haven is the administrator of a pension fund paid to five orphans in Sebokeng. Their parents passed away in September 1999 from AIDS related diseases. It was established that the pension was being misappropriated by an auxiliary social worker, thus Nkosi's Haven was approached. A bank account - Nkosi's Haven Sebokeng was opened, with the pension being paid directly into the account. Nkosi's Haven purchases the orphans groceries, pays school fees and transport, and the electricity bill from this account.

#### **5. MEDICAL**

Dr. Sue Black, highly qualified family physician from the USA, volunteered four years of her life to establish and run our nine bedded sick bay unit. Dr Sue did amazing work and having a resident doctor allowed us the opportunity in admitting patients for stabilization referred to us when there was nowhere else for them to go. There is no doubt Dr. Sue saved many a life and it was our loss when she returned to the USA December 2009 for personal reasons.

#### **OUTPATIENTS DIVISION**

All clinic appointments are scheduled and mothers are instructed to give follow up reports to the sick bay staff where all medication changes are addressed and progress and problems noted. Several residents from the Berea facility and the Village have been identified as unable to take their medications without assistance either because of their lack of schooling or complexity of the ARV/TB regimens. They have been assigned responsible Moms to monitor them or treatment buddies. For some residents who have proved to be irresponsible, the medications are given in front of nursing (DOT).

Weekly clinics are held twice a week in the Berea facility to monitor episodic illness and wellness monitoring with weights and general school performance are addressed. Daily clinics are run at the Village as the doctor makes visits daily for the sick bay and sees all ill residents.

We serve as consultants for two home based care agencies in Soweto who care for orphans in parentless homes. We are also often asked to children with medical problems as a results of non compliance to ARV regimes.

## 6. EDUCATION - Report by Heather Snyman

Nkosi's Haven has 139 children of which 50 are AIDS/HIV orphans. 33 of our children are infected.

48 of these children live at the Village and the balance live at the Haven.

**Haven** : The majority of our children at the Haven in Berea attend United Church School (UCS), which is a private school in Yeoville-private in the bridging sense. We currently have 20 children at UCS. We have 5 matriculants this year who aside from preparing for the finals are also making preparations for their 'matric dance'.

At this stage two of the young learners have expressed a desire to continue their studies next year and investigation into suitable tertiary colleges and universities will be made during the course of this year.

11 children, who for various reasons, are not suited to attend a mainstream school, attend Sparrow High School where over a period of 3 to 4 years they will learn a skill/trade such as catering, welding and so on.

One of the children at Sparrow High School was selected to complete a learnership program which runs concurrently with his studies . This program is SETA approved and will stand him in good stead to be employed in his elected trade after he has completed his schooling.



Information Technology at CTI College has left the College and is now working full-time. Our University

One of the students from Sparrow High School who completed his schooling last year is attending Immaculate College where he is furthering his studying in Graphic Design.

The young student who matriculated last year and was studying a Diploma in



student, studying at the University of Johannesburg (UJ) is now in her 3<sup>rd</sup> year toward a BA (Media Communication). The other, a BA (Personnel Management) student, decided to place his studies on hold and is currently looking for employment.

A further student is enrolled at Damelin studying toward a Diploma in Travel and Tourism. The learners who are doing tertiary education live outside the Haven in student quarters.

**Village** : With regard to the children at the Village , 22 children attend Foundation Primary School which is a remedial school in Melville . The balance of 22 children attend Christian Calvary School which is a mainstream school close to the Village.



Two of our children attends Futura School for children with special needs.

One of our 'outreach' boys attends The Mechanic School .

## **7. THERAPEUTIC SERVICES - Report by Heather Snyman**

### **7.1 Individual Counseling**

Individual counseling is available to all the resident mothers as well as children not seen in Play Therapy. The residents who are not conversant in English were referred to our Social Worker for counseling.

In order to maintain confidentiality, mothers are seldom counseled with their children, unless a request is made by one of the parties regarding a specific issue.

One of the ongoing concerns is the mother's reluctance to disclosure her HIV status to her children before or soon after admission to the Haven. This raises a concern in a residential home such as this where HIV/AIDS is openly discussed.

### **7.2 Specialized Therapies**

#### **7.2.1 Play Therapy**

Nkosi's Haven has employed the services of three Play Therapist in part- time positions. One of the Play Therapists works with children at the Haven and the other two work with our children at the Village. Our Play Therapist are highly qualified woman who have extensive experience in working with young children.

We identify young children who, because of their history and emotional problems, are thought to be in most urgent need of assistance. The expected outcomes include:

- Creation of a safe and trusting space for children to build self-confidence and express themselves.
- Empowering children to share their feelings and opinions
- Facilitating curiosity and self-discovery
- Teaching children to recognize their own needs and to learn to ask for help
- Facilitating children to feel comfortable enough to 'tell their story'
- Building self-esteem and self-respect
- To build a sense of hope
- To feel connected with others
- To have fun!

Our Play Therapists, at their discretion, provide individual and group sessions.

Furthermore, during the school holidays the Play Therapists give workshops on, amongst other topics, sexual boundaries and/or bereavement were necessary. These workshops provide an opportunity to include other young children at the Haven who have experienced a loss of both or one of their parents and who continue to struggle with their losses. The sexual abuse workshops equip our children with the basic knowledge of their rights and will hopefully stand them in good stead in their future.



Although psychological outcomes are difficult to quantify, based on observable behavior as well as improvements in the grades of these children, it is clear that the objectives of this intervention are being achieved and need to be continued.

### **7.2.2 Uvemvane Project ( U.J)**

Nkosi's Haven has been fortunate to be selected by this project as beneficiaries of pro bona counseling by Intern Psychologists.

We currently have 10 children who attend Group Play Therapy (in 3 groups) as well as individual Play Therapy for 3 children.

Our children attend this therapy one a week.

### **7.2.3 Remedial Intervention**

We have employed a part-time Remedial Teacher who has extensive knowledge and experience in her field.

Many of our children lack the basics in phonics, which contributes to their low reading ability. At the outset, it appeared that children who were not in dire need of remedial intervention were asking for permission to join the classes. It was felt that since children learn from one another in a classroom situation, that although she would focus on the problematic children, she would admit any willing child into the remedial class, space willing.

Specifically, attention is given to the following:

- Fine motor co-ordination
- Numeracy
- Phonics
- Visual Perceptual Skills
- Auditory Skills
- Gross Motor Co-ordination
- Life Skills

Furthermore, many of our older children, specifically our adolescents, have been taught in a vernacular prior to coming to Johannesburg, and when they are admitted to the Haven, they attend a school where lessons are conducted in English. It was decided to extend the Remedial classes to include these young people to help them to overcome this 'language' disadvantage.

As with the other interventions, there has been an overall and substantial improvement in most of the results of the children attending.

Our remedial teacher has extended her services to include a weekly lesson in Afrikaans, as the children need to pass 2 languages at High School.

### **7.2.4 Occupational Therapy**

This is therapy based on performing the meaningful activities of daily life ie self-care skills, education, or social interaction within the school system, occupational therapy helps children facing physical , cognitive, or mental health challenges that affect their school performance, socialization and health.

Occupational therapy assessment and intervention focuses on the following areas:

- Activities of daily living (caring for self-needs such as eating, dressing, and toilet habits)
  - Education (achieving in the learning environment)
  - Play (interacting with age-appropriate toys, games, equipment and activities)
  - Social participation (developing appropriate relationships and engaging in behavior that doesn't interfere with learning or social relationships)
- AOTA (The American Occupational Therapy Association . INC)

These assessments may result in further investigations and interventions. This year 2 children were referred for further pediatric neurological assessments as well as speech therapy and in some cases, eye tests.

Nkosis Haven was fortunate to have been allocated 6 slots by the University of the Witwatersrand -Occupational Therapy Department for our children.

Children are only discharged from Occupational Therapy if they have reached all their developmental milestones.

Our children attend these therapy sessions on a weekly basis.

### **7.2.5 Speech and Hearing**

Nkosi's Haven was fortunate this year to be allocated 10 slots for selected children whom we feel would benefit from this therapy.

The clinic also provided us with free hearing tests for children who are reported by their teacher to possibly have a hearing problem.

### **7.2.6 'Extra' Mathematics**

We employed a part-time mathematics teacher to assist our Grades 10, 11 and 12 with maths once a week after school.

The type of work she is covering with the younger children includes doing basic equations, factorization, exponents, graphs and now the introduction to trigonometry, first introducing them to the theorem of Pythagoras. She is concentrating on the basic concepts so that they understand the MEANING of what they're doing.

For the older children she has spent a lot of time going over tests and back to basic principles. The statistics and graphs have gone very well and the improvement in their marks shows the result of their motivation and her teaching skills.

With the young group she found that they had no idea of the meaning of a fraction and had "workshops" using concrete aids and talking through the meaning of the halves, quarters etc. while they divided the unifix cubes into equal parts. After a number of lessons she found that there was a better understanding by some members of the group. Although they have great difficulties in comprehending the questions 'they're a lovely group to teach and get very excited when they can do something right' and 'they have not missed any lessons and are learning to do their own reasoning instead of grabbing ideas by rote'.

Unfortunately our Maths teacher left in January 2010.

Nkosi's Haven is currently using Master Maths for our older children at mainstream schools and we hope to extend this service to include more learner as funds become available.



### **7.3. 'Out Patient' Interventions**

During the above period we continued to avail our (free) counseling services to a varied population of men and woman and children of all races and ethnic groups, not limited nor restricted to issues around HIV/AIDS.

Clients whom we assisted were referred by the local schools, some were 'walk ins' (arriving at the gate) and some were referred by extended family or friends of existing residents and others were referred to us by organizations we deal with.

Generally, we have found that short-term interventions (between 1 to 10 sessions) and/or referral to other organizations would suffice.

The issues were varied and included:

- people who are destitute and need shelter
- trauma counseling after a car hi-jack
- how to help parents to disclose to a child regarding a positive HIV diagnosis
- divorce/separation
- pre-and post counseling around HIV testing

- how to disclose HIN status to family members
- death and bereavement counseling for children (siblings)
- rape
- fostering and adoption
- 

The Haven also received a number of telephone inquiries as well as email enquiries asking for advice on the above issues where the client preferred not to come in person. Where necessary, counseling was done telephonically.

In terms of payment to the Haven, it was suggested to the clients that they may make a donation to Nkosi's Haven be it monetary or materially.

## **8. INDIVIDUAL COUNSELLING - Report by Siphon Vundla**

Individual counseling has been offered to 40 mothers and 13 children, bringing the total number of clients to 53. One of these mothers passed away in March. She had labour related issues with her employer and she was helped to sort these problems before she passed on. Five of the mothers left on their own accord and we have not heard from them since. In February one of the mothers had to be admitted to an alcoholic rehab as she was battling with alcohol abuse. She has since been discharged and she attends therapy regularly. She also was also admitted at SANCA as an out-patient. There is constant communication between SANCA and Nkosi's Haven to ensure that the mother receives maximum support. One of the children passed away at the baby day centre, and this was a traumatic experience for both the mother and other residents. The mother receives grief counseling regularly and she seems to be coping very well.

One mother is currently doing a Human Resources course through Damelin College. She was critically ill when she was admitted and she had no hope for the future. Through care and nurturing, she has gained self esteem and she is thriving and is very motivated. This is the ideal situation that we envision for each and every mother who is admitted here.

Some of the main issues that surface during intervention include acceptance of their status, and disclosing to their children about their status. In therapy we work towards helping them deal with their feelings of guilt and shame before they can disclose to their children. The women also have a lot of anger towards the "world at large" and therefore have problems relating to others. This leads to a lot of conflicts and therefore conflict resolution skills has been a major part of therapy. Therapy has been very affirming and we have seen some improvements in some of the mothers. Working with the mothers often means liaising with their families, referring people and at times with Child Welfare. Home visits have also been conducted on behalf of the residents. One case has been referred to the Children's court. The client has been prepared for court procedures and reports have been written in support of the client.

Dominant issues amongst children include,

- self acceptance and respect
- Identifying feelings and how to show feelings appropriately
- Dealing with the reality that their mothers are sick and can even die
- Uncomfortable changes in their bodies, and what this means
- Death and bereavement counseling

### **Grant and ID applications**

There has been a great need for birth certificates for children and IDs for the mothers. The Department of Home Affairs was invited to offer these services to the residents onsite. Five children got their birth certificates; two mothers lodged applications for their IDs and one applied for a passport which she has since received.

Six residents applied for a disability grant and they were all successful.

### **Wills/Exit plans/Individual development plans**

All mothers at the village have signed their wills, a copy is given to the sickbay in case of emergency and to the resident manager/matron. A "care plan" has been devised for all mothers and this is done in a multi-disciplinary setting, which include the doctor, the psychologist, social worker and the residential manager/matron. An individual development plan conducted by the social worker also helps towards the exit plan.

### **Other services**

A fashion show was arranged with some local designers for the teenagers. The show was a success and both teenagers and mothers were motivated. A partnership has been formed between the designers and Nkosi's Haven to teach the teenagers to be creative and responsible.



## 9. VOLUNTEER PROGRAMME

### NUMBER OF FOREIGN VOLUNTEERS:

In February 2010 we said goodbye to our much loved Volunteer Liaison Person, Penny Wilson. Penny decided it was time to take a much needed sabbatical.

### COUNTRIES OF VOLUNTEERS:

Germany

Canada

Sweden

Norway

United States

Belgium

Australia - Qantas Cabin Crew - twice a year visit, to do repairs, painting, garden layout. We were they were able to join us for the opening on 1<sup>st</sup>



raise money thrilled that December.

### WHAT THE VOLUNTEERS DID:

- Assisted children with their homework and paired reading.
- Assisting with preparing of meals in the kitchen
- Art projects
- Entertaining children during the school holidays
- Working in the Baby Day Care Centre



## **LOCAL VOLUNTEERS:**

Most of our local volunteers are from companies and school groups or students who need qualifying points to enter university.

**Roedean Girl School** – was again chosen Nkosi's Haven as their charity organization for their community project.

This year they conducted reading sessions, invited the children for a Fun Day, Easter Egg hunt, Term End Party which was held at their school. In addition a Ballet Evening was held at the school as a fundraiser for Nkosi's Haven - dinner, drinks, a ballet performance by the girls as well as a movie of Mikhail Baryshnikov

## **VISION OF JOY**

### **Monthly activities**

This year VOJ held monthly activities with the kids. Each monthly event had a theme where kids were expected to interact, use their skills and basically enjoy themselves. The activities included karaoke, baking, face painting, collage making, soccer tournament, dance competition and African drumming. The various themes included Easter, Halloween and Christmas.

The Christmas party in November 2009 was particularly enjoyable where one VOJ member dressed up like Santa Claus and distributed gifts to all the kids. The kids were also treated to a KFC lunch at the party.

### **Education**

Education wise, a member of VOJ tutored a couple of kids in economics for a couple of months before the final exams. The VOJ members also held a life skills course where the older kids were guided with respect to writing professional emails and letters. A careers day was organized in January 2010, just in time for the kids' school enrolment for the new year. Here we had well established professionals from all various professions come and guide the kids in terms of career choices.

### **House maintenance**

VOJ employed and financed a contractor for the Berea home. As a result the garden was renovated, the vegetable garden and sandpit was improved, the piping and washing lines were fixed and the jungle gym was repainted.

**CHEESEKIDS:** Young business people formed the Cheesekids to get involved and do 'hands on' work at various charities - Nkosi's Haven is fortunately one of the appointed

charities. Not only do the Cheesekids come through to the Havens to give the homes and garden a 'face-lift' - the children are very often taken out in groups.

- Laying of the Lawn - 10 April 2010
  - Laying of grass
  - Cleaning up of various areas
  - +/- 50 people present
  
- Nedbank Charity Cup - June 2010
  - World Cup curtain raiser
  - +/- 10 kids
  - Kids transported from the haven to the stadium
  - Kids were given lunch packs
  
- Mandela Day - 18 July 2010
  - Painting of girls house and various other areas
  - Cleaning of various areas
  - Gardening and planting
  - +/- 100 people
  
- Mandela Day Continues - 7 August
  - Clean up & touch up of various areas
  - +/- 20 People

## 10. VISITORS

Virgin Unite April

Glenross University May

Spirits of Africa Medical Students May

Quantas Cabin Crew June (Having a lunch break)  
and December

Spirit of Africa Nursing Students June

Weeshuis Den Hervormden June

4 Life Research Chairperson and Family David Lissonbee July



Kidz Rights October

Linda Tarry-Chard November

Partnership Foundation Rustenburg January 2010 (44 Grade eleven's x3)

Infinite family February 2010

Cedar Foundation March 2010

Association of Christian Schools Canada March 2010

Kidz Rights - March 2010

Keep a Child Alive - Leigh Blake March 2010

## **11. SOWETO GOSPEL CHOIR OUTREACH - VUKANI**

The Choir has once again achieved international awards, nominations, accolades and achievements with standing ovations at every performance. Known internationally for their amazing talent, energy and exhilarating performances, the choir never forget their South African roots and continues to support those less fortunate.

The choir tours so often that they seldom see the pure joy, relief and appreciation from the children and organizations who are receiving their support. They certainly deserve a "humanitarian" award for their continuous support.

This financial year the Choir raised R 1 751 316.45 through silver collections after each performance. The fund is equally divided between Nkosi's Haven (we were adopted as their CSI project) and their Vukani Outreach programme, which is used strictly to support registered township based organizations, caring for vulnerable and orphaned children.

Nkosi's Haven administers these funds and does all the liaison work with applying organizations and relevant suppliers. No money is ever handed out and organizations are supported with food, groceries, meat, vegetables and occasionally appliances, support with funerals (particularly if a parent has died leaving four children with nothing) is given, and educational support when a child is being threatened with 'no entry' to school.

All organizations experience extremely hard times at this time of the year. It is the end of their financial year - budgets have been prepared and presented, but decisions have not yet been made or funds received. Cupboards and tummies are bare and the list of requests to Vukani is miles long.

The Vukani bank account had limited funds which had to be stretched miles - plans were made, but organizations certainly did not receive their usual bulk supply.

**MAY**

**Lusito:** A feeding scheme started by a young man and his paraplegic mother. Living in an exceptionally destitute area, they became aware of hundreds of children needing support and presently feed 350 children at least twice a day.

Meat	R 3 000.00	May
Groceries	R 7 210.45	May
Fruit & Veg	R 2 122.94	May

**St John Apostolic Church:** a feeding scheme for 449 elderly and children daily - cooking is done in a 'marquee' and every effort is made to prepare at least two meals per day.

Meat	R 5 000.00	May	R 4 000.00	December
Fruit & Veg	R 3 499.90	May	R 969.86	December
Groceries	R 8 805.25	May	R 3 189.38	December

**Thusanang:** based on the far Westrand - a community feeding scheme for 420 children run from a reasonably established community centre with a kitchen partially equipped by Vukani.

Meat	R 6 000.00	May	R 4 000.00	December
Fruit & Veg	R 3 499.90	May	R 969.86	December
Groceries	R 8 998.00	May	R 3 595.25	December
Transport	R 1 500.00	August		
Gas cylinder	R 1,250.00	November		

**Harvestime Ministries:** a newly formed ministry in Tembisa targeting orphaned children - accommodation, feeding scheme and pre-school. 150 children are catered for and Vukani assisted with establishing the kitchen, eating area, and groceries

Fruit & Veg	R 1 272.97	May
Groceries	R 3 536.90	May
Meat	R 1 880.00	May

**Esophiweni Temple:** Based in Rockville Soweto -self help projects for the unemployed Women and feeding 80 orphans

Fruit & Veg	R 1 272.97	May
Groceries	R 3 536.90	May
Meat	R 1 880.00	May

**Zimbanthi:** Tembisa North Eastern Township Feeding 540 (+-100 families mostly child headed households)

Meat	R 1 880.00	May
Fruit & Veg	R 3 499.90	May

Groceries R 8 486.20 May

**Eyethu:** A Sowetan based facility for physically disabled children totaling approximately 50 children - it operates as a day care facility with the intention of becoming residential.

Meat R 2 000.00 May

Fruit & Veg R 1 272.97 May

**Ikusas ethu Youth Project:** Youth project in Freedom Park squatter camp feeding 391 children, 118 patients and 42 grannies.

Fruit & Veg R 3 499.90 May

Groceries R 8 001.65 May

**Pimville:** Methodist church HIV/AIDS Call Group feeding 120 orphans and Vulnerable children

Fruit & Veg R 1 272.97 May

Groceries R 5 239.05 May

**Mapetla Secondary School** for 38 children from exceptionally impoverished community  
Blazers and jerseys R 14 440.00 June

**Mavis Street child centre:** a residential care facility started by a woman for street children mainly from a suburb called Hillbrow. She was offered a facility in a suburb in west of Johannesburg - caring for 42 children residentially.

Bunk Beds R 19 903.10 May

**Thokomelo:** Home based care Orlando East Feeding 180 children

Groceries R 5 250.70 May

**Normande:** Located in Lombardy East Abandoned Baby Facility for 31 babies

Nappies R 4 968.00 September

**iMbali Primary School:**

School Uniforms for grade sevens based in Orange Farm. R 27520.00



**Sekusile Outreach:** Based In far Northern KZN Village with 200 orphans product seedlings to help them towards self sustainability

Seedlings	R 2 261.00 July
Chemicals	R 3 950.00
Livestock and Vegetables	R 12 000.00 December

**Kholwani Primary:** Based In Jabulani Soweto feeding 350 orphans and vulnerable children twice a day.

Meat	R 8 544.00 August
Fruit & Veg	R 4 668.71 August
Groceries	R24 723.45 August

**Tshwaranang Womens Community Support Group:** Based in far Westrand this group of women was given a container to start a sewing group which has also ended up as a kitchen and feeding scheme for orphans - 130.

Meat	R 4 096.00 August
Fruit & Veg	R 2 699.22 August
Groceries	R 8 168.96 August

**Gogo - Outreach:** a group of 'gogo's (elderly women) organized a mid year Christmas party for a group of elderly people.

Groceries	R 2 043.95 August
Fruit & Veg	R 346.87 August

**Matjele Community:** Based in Dobsonville Soweto feeding 110 orphans and vulnerable children.

Meat	R 6 349.00 September
Fruit & Veg	R 5 166.55 September
Groceries (Chest Deep Freeze)	R12 214.35 September

Meat	R 2 040.00 December
Groceries	R 2662.73 December
Fruit & Veg	R3213.21 December

**Tebogo Family:**

Fruit & Veg	R 3 922.42 September
-------------	----------------------

**Makro Staff and Drivers**

Christmas gift R 800.00 December

**Dudu Old Age Home: Annual Christmas Party organized by Dudu for 1000 pensioners**

Meat R 2040.00 December

Fruit & Veg R 3 259.35 December

Groceries R 1 730.40 December

**Thusong: Based in Alexandra Township Christmas party for 700 kids**

Fruit & Veg R 3 718.03 December

Meat R 2040.00 December

Groceries R 2396.80 December

**Living in Hope: Based in Germiston feeding 250 orphans and vulnerable children.**

Fruit & Veg R 604.92 December

Meat R 2 000.00 December

Groceries R 2 329.29 December

**Bophelo Homebased Care: Based in Meadowlands and run by two elderly women, Bophelo is a feeding scheme for approximately 150 children. Two meals a day are given and food parcels issued to their home - home based care families.**

Meat R 5 000.00 May

Groceries R 4 328.85 May

Fruit & Veg R 2 122.94 May

Meat R 4 000.00 December

Groceries R 2 662.73 December

Fruit & Veg R 3 213.21 December

**Lebone: Homebased Care based in Thembisa\_food parcels for patients**

Meat R 2 040.00 December

Groceries R 2662.73 December

Fruit and veg R 3 213.21 December

**Tsogang Sechaba: situated near a huge squatter camp and in a very poor suburb of Soweto, TS feeds 1200 children per day either at their property or at schools they are contracted to support**

Meat R 6 000.00 December

Fruit & Veg R 1 824.73 December

Groceries R 4 848.75 December

Repairs to ceilings in the computer room

R6 859.40 Sept

**Staff Member Funeral**

Meat	R	231.80	January 10
Groceries	R	1 500.00	January 10
Fruit and Veg	R	900.00	January 10

**Sedibathuto Primary: Chiawelo Soweto** The Choir were being filmed as a build up to the World Cup, their phenomenal rise to success and their humanitarian 'achievements'. This particular school was chosen because of the number of VOC's coming from exceptionally deprived circumstances. Very seldom are the choir involved in the physical outreach as they are inevitably touring and do not experience the absolute relief their support brings. When they are involved the excitement around their 'appearance' and absolute joy when they put on an impromptu performance for the children is a heartwarming experience. The 258 children that were assisted in this outreach even had a quick 'game' of soccer and sat entranced with the choir's 'command performance' just for them.

Meat	R	6 349.00	February 2010
Fruit & Veg	R	2 479.06	February 2010
Groceries	R	12 783.90	February 2010
Transport	R	450.00	February 2010

**Trollip Family Funeral:** Four family members burnt to death by another family member.

Meat	R	825.00	March 2010
Fruit & Veg	R	2 194.59	March 2010

**Funeral in the Eastern Cape choir member's brother**

M L Fata	R	2 275.00	October
----------	---	----------	---------

**Vaal Triangle Outreach** Four organisations each given a comprehensive food parcel and cleaning material mostly child headed households a 160 children each received these food parcels

R 73 810.00 October

**Family Worship Centre** Hospice in Westbury Johannesburg  
Provided tables and chairs for hospice dining room

R 4266.00 October

**Four Boys Funeral** Donation of groceries and food. Four school boys knocked down by a Celebrity

Groceries R 3 825.00 March 2010

Vegetables R 4 319.00 March 2010

Meat R 3 300.00 March 2010

## **12. EXTRA MURAL ACTIVITIES**

### **Infinite Family**

Net Buddies is a program in which teenagers between the ages of ten and twenty three are matched with a mentor in the US with whom they can "chat" via the internet doing video conferencing twice a week and send emails.

In May 2009 the number of net buddies increased, Infinite Family matched 11 new kids from the age of 10-14years to become net buddies. These kids are now doing Video Conferencing with their mentors every week.

The project has so many positive aspects to it

There are now 35 net buddies in total, 22 girls and 13 boys.

### **Bombardier**

Infinite Family currently works together with Bombardier/Bokamoso (Gautrain Project) career guidance for the net buddies.

Their purpose is to identify career opportunities for the net buddies who are currently going to school .

They also establish a mentoring relationship for the net buddies and to guide them in terms of studies that will best meet their future aspirations.

Net buddies meet with the Bombardier team every 3rd week of every month. Net buddies discuss or learn more about a particular Topic in every meeting e.g. marketing.

## BALLROOM AND LATIN DANCING - by Martine Davis

At the start of this financial year, we danced in the hall of the St.Marks Church in Yeoville. The hall was a fabulous size with a wooden floor, but I was always neurotic with safety and keeping the premises locked, and worried about the younger kids walking in the streets on Friday afternoons. There were 10 regular dancers in the first class (up to 11 years ) and 11 regular dancers in the second class (from 12 years ).

The issues with the first class in this year was that there were 3 different levels of dancers so unfortunately the more advanced kids did not progress very much. The majority of the older kids had an enormous amount of potential and some of them were outstanding dancers. They did start to compete, but would not settle with a partner and refused to dance the "All girls section", and as there were only two boys in the class it was a problem, so the competitions stopped. There were discipline issues, but once I had set the rules and stuck to them, and gave them the choice of "Martine" or "Super Bitch" they did eventually settled down and actually learned an incredible amount. They did not realize it, but some the routines they danced were actually very difficult for dancers of their level. The two boys (Lucky and Daniel) were both outstanding and were actually the most conscientious of the class.

Towards the end of 2009 we moved to the studio at the Village. The floor is an absolute dream to dance on. The kids from the Village were put into one class which was more fun to begin with and learned a few basics by December 2009.

In January 2010 the Berea kids stopped dancing. I am very upset that their talent has been wasted.

I divided the Village kids into three classes at the beginning of 2010 based on ability and not age. Unfortunately we lost most the boys, as some left "the haven", some were in Berea and some gave up. By March 2010 there were 10 kids in the first class(slower pace), 6 in the second class. There were only 5 girls in the third class, all ex Berea with a lot of potential.



### **13. STAFF - FULL TIME**

#### **Nkosi's Haven Village**

1. Founding Director
2. Therapist
3. Social Worker
4. Operations Manager
5. Matron
6. Resident Manager
7. Sister - Sickbay
8. Three Orphan Child Minders
9. 'Chef' - (Resident mother employed)
10. Two Chef assistants (Resident mothers employed)
11. Laundry manger (Resident mother employed)
12. Baby Day Care (Infant educationlist)

#### **Nkosi's haven 4Life farm**

1. Farm Manager - Nkosi's Haven 4Life Farm
2. Gardener
3. Produce preparer and assistant

#### **Nkosi's Haven Berea**

1. Resident Manager
2. Matron
3. Volunteer Liaison Person - The Haven Berea
4. Chef - ex resident mother employed
5. Security Person

#### **Staff - part time**

1. Financial Manager
2. Play Therapist : 2
3. Sick Bay Relief Assistants : 3
4. Remedial Teacher
5. 3 x Resident Mothers as child care workers
6. PA to the Director - The Village
7. Receptionist - The Village

## 14. CORPORATE GOVERNANCE

### Directors

Gail Johnson

Founding Director

Pastor Dolores Fredericks

Non-Executive

## 15. THE BOARD

Mr Tiny Koen

Chair Person

Pastor Dolores Fredericks

Treasurer

Gail Johnson

Founding Director

Dr Sue Black

Medical

Shaheeda Omar

Childcare Specialist

Humphrey Birkenstock

Media

Renee Kruger

H/R

Derek Postmus

Advertising

Pastor Winnie Tshirumbla

Business Woman

Heather Davidson

Financial (Part-time staff)

Heather Snyman

Therapist

Nadira Haripersadh

Architect

Suzanne Ravenall

Patron

The board meets at least every 6 weeks but usually monthly.

Nkosi's Haven operates thirteen bank accounts for the various projects, all payments are made against requisitions with related quotations or invoices. There are three signatories with a minimum of two signatories per cheque.

LAYWERS

EDWARD NATHAN

AUDITORS

KPMG

AD AGENCY

CHEIL WORLD WIDE



## **Nkosi Johnson**

4/2/1989 - 1/6/2001

# **HIS LEGACY CONTINUES**

Nkosi's Haven  
34 Vereeniging Service Road  
Alan Manor, 2091

P O Box 403,  
Melville, 2109,

(011) 942-5580 (Tel)  
(011) 941-1408 (Fax)  
Website: [www.nkosishaven.org](http://www.nkosishaven.org)